

Vergrößerte Abbildungen zu dem Beitrag:

Faulstich-Wieland, Hannelore: Wem nützt die Einrichtung einer Mädchenklasse? In: Zeitschrift für Frauenforschung & Geschlechterstudien 22 (2004) Heft 4, S. 39-57

Abbildung 1

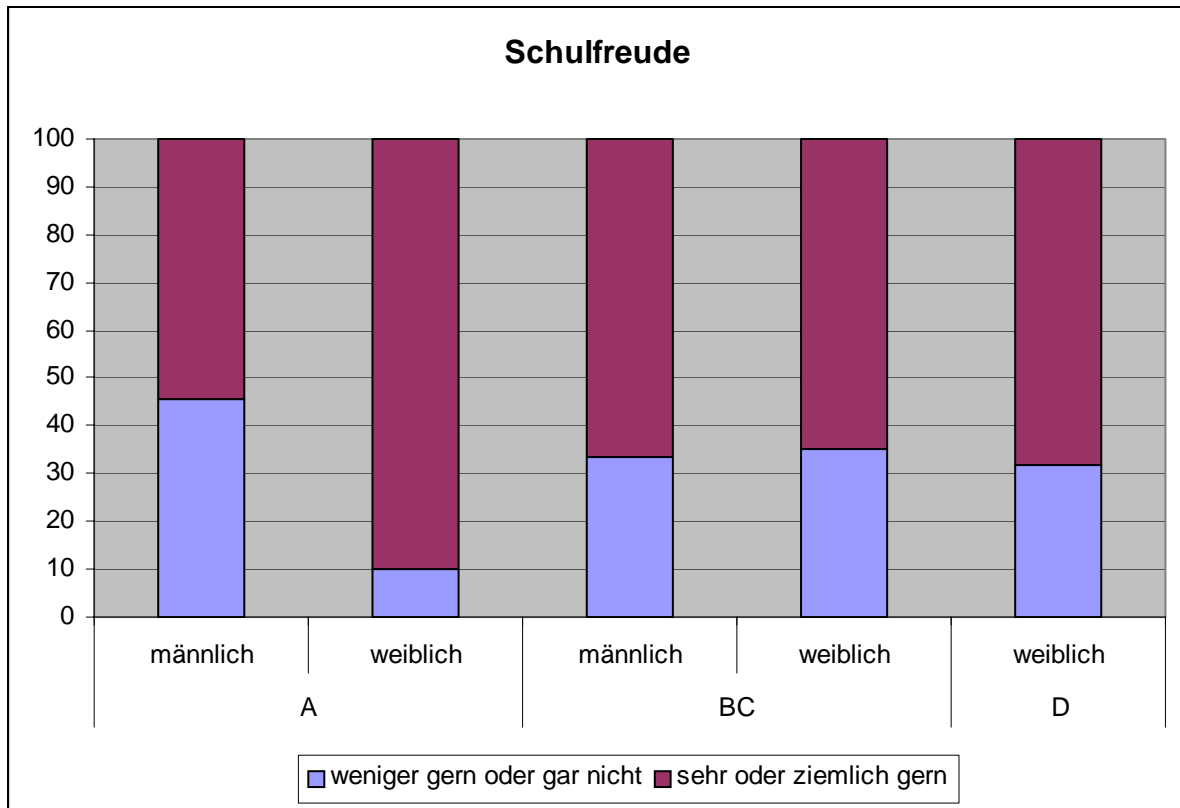


Abbildung 2

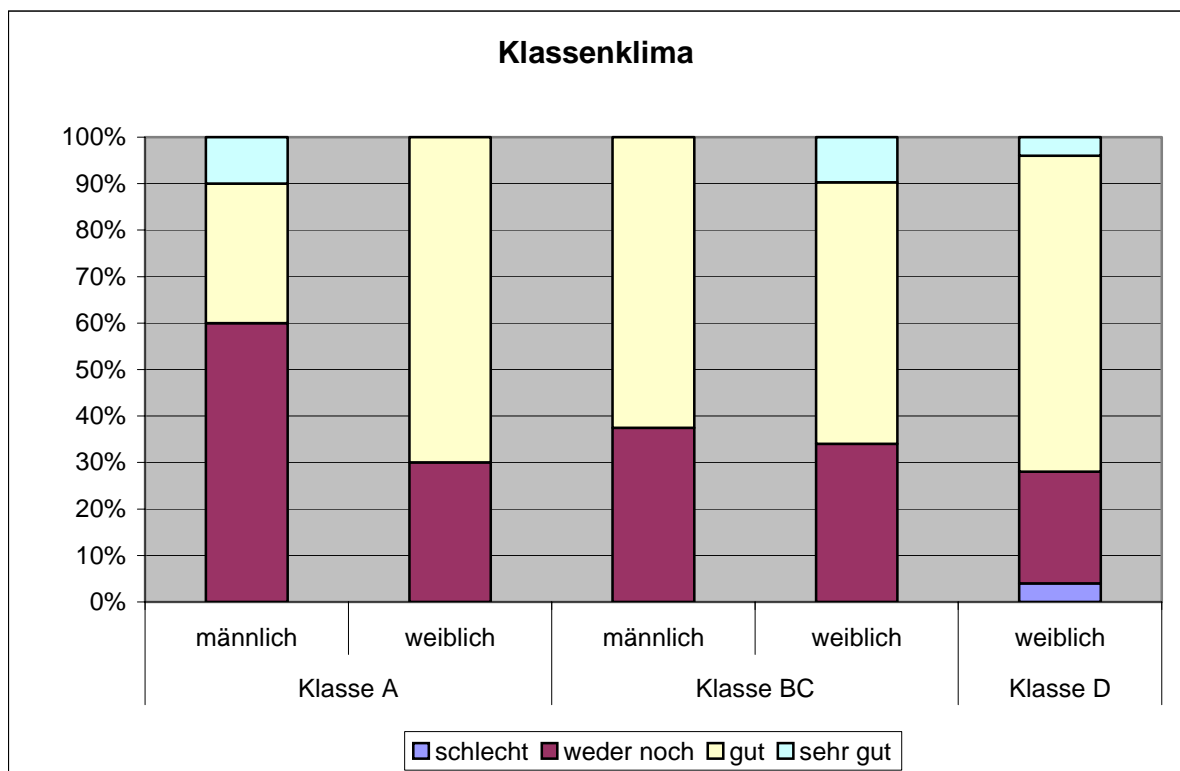


Abbildung 3

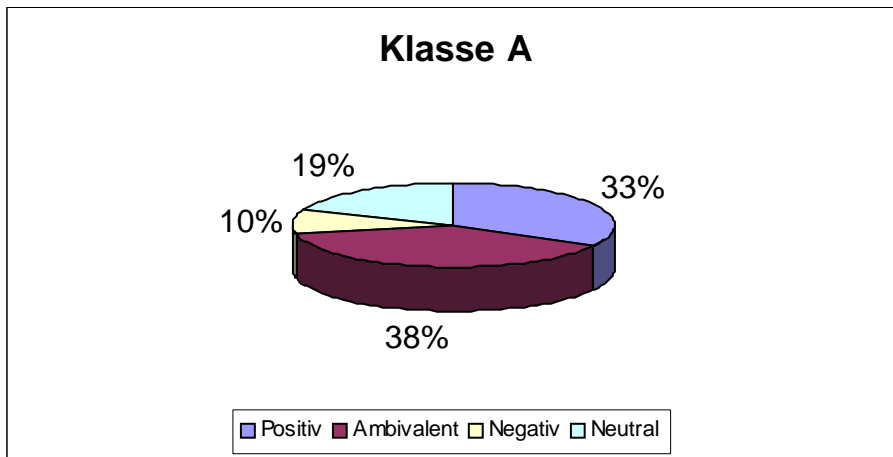


Abbildung 4

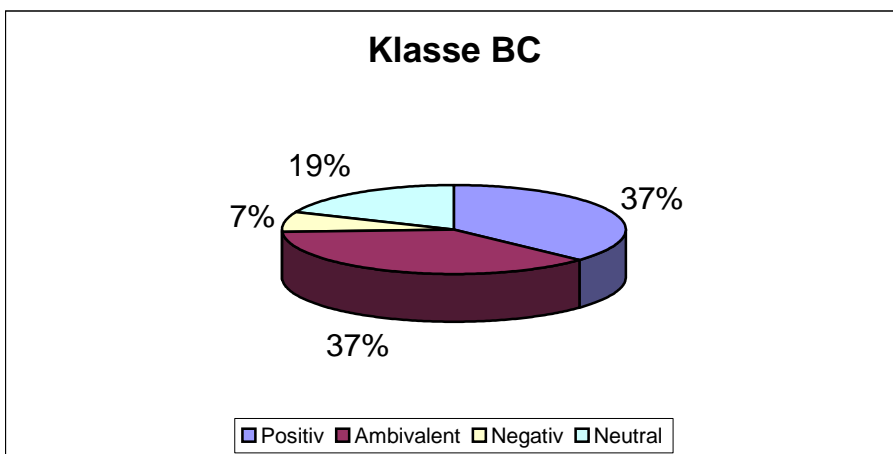


Abbildung 5

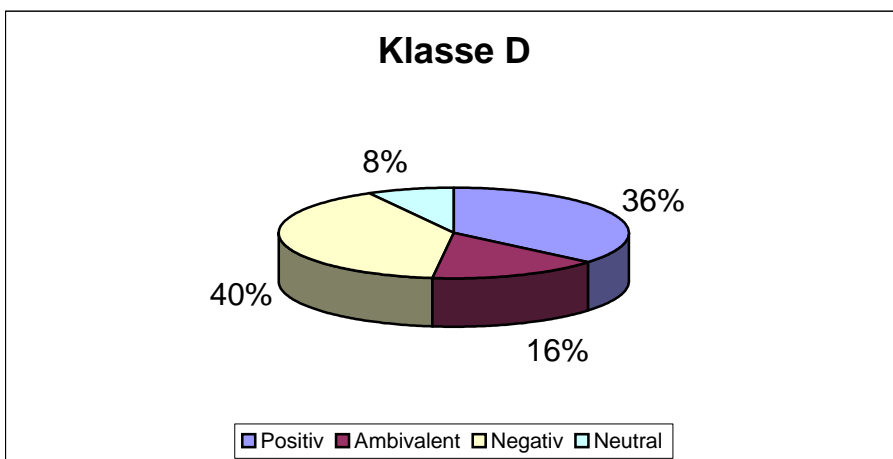


Abbildung 6¹

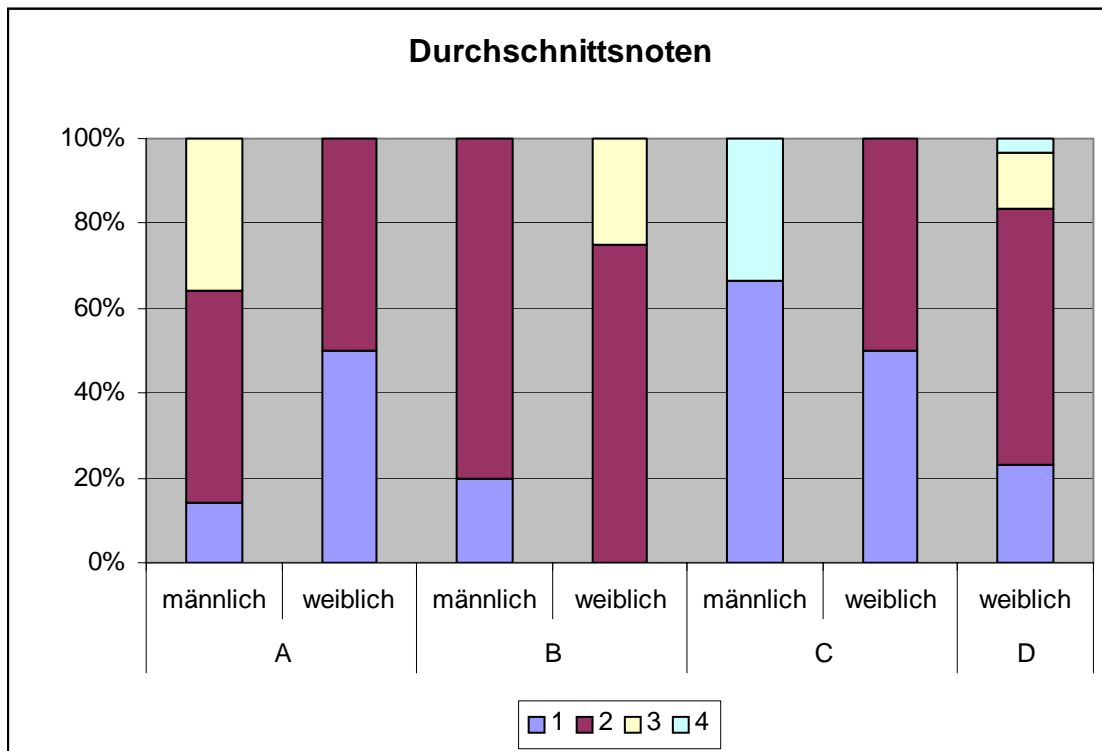
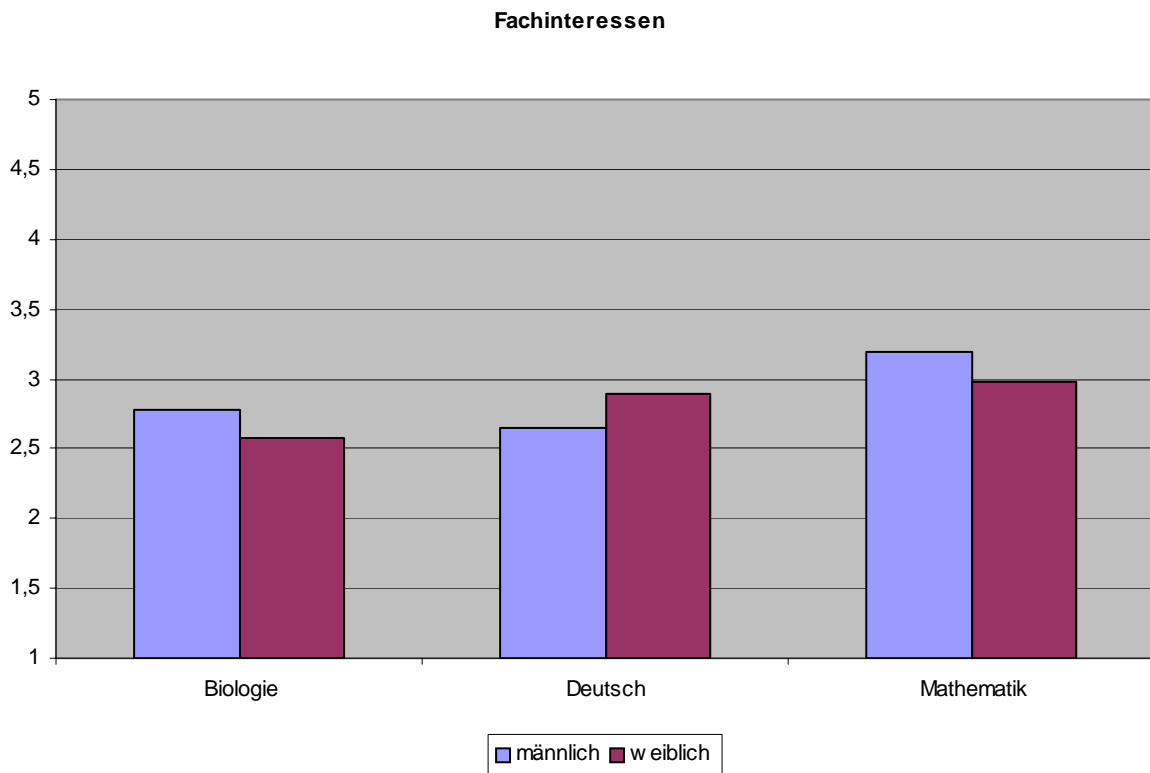


Abbildung 7



¹ Vergleicht man die im Fragbogen angegebene Leistungsselbstschätzung nach dem ersten, mittleren oder letzten Drittel, so stimmt sie weitgehend mit den tatsächlichen Leistungen in Form der Noten überein (Korrelation .743, signifikant; Jungen .721, Mädchen .771).

Abbildung 8

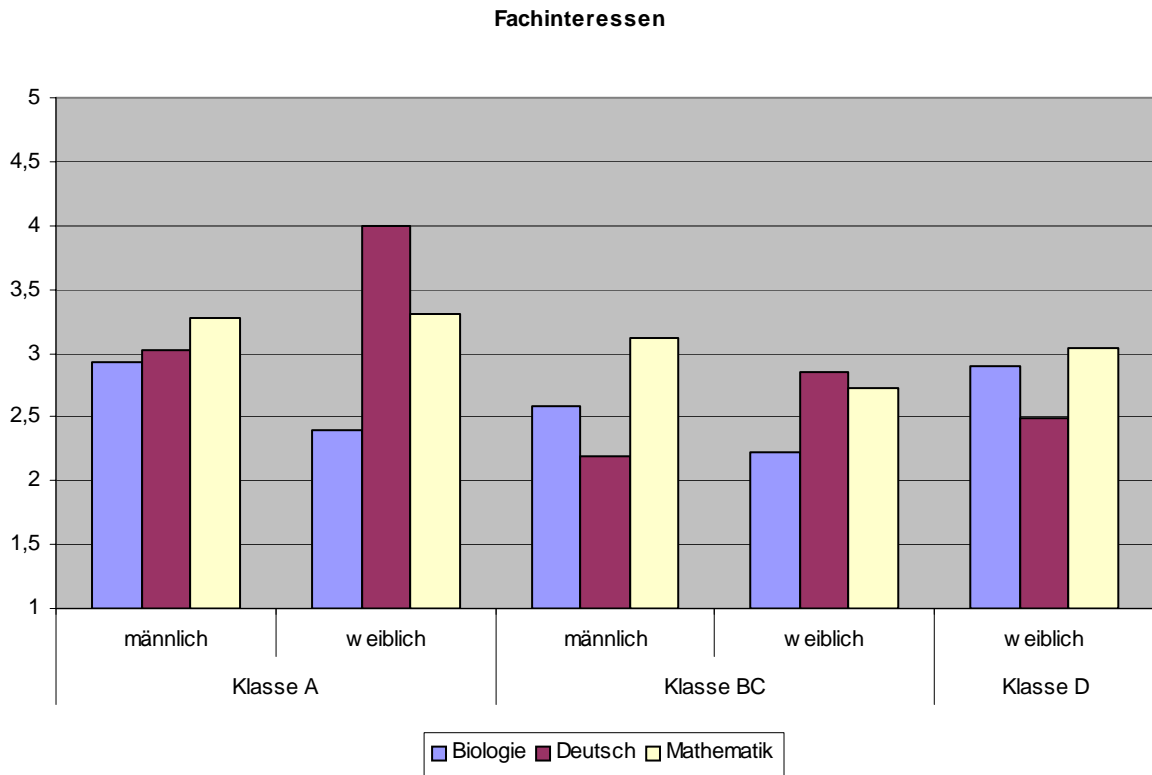


Abbildung 9

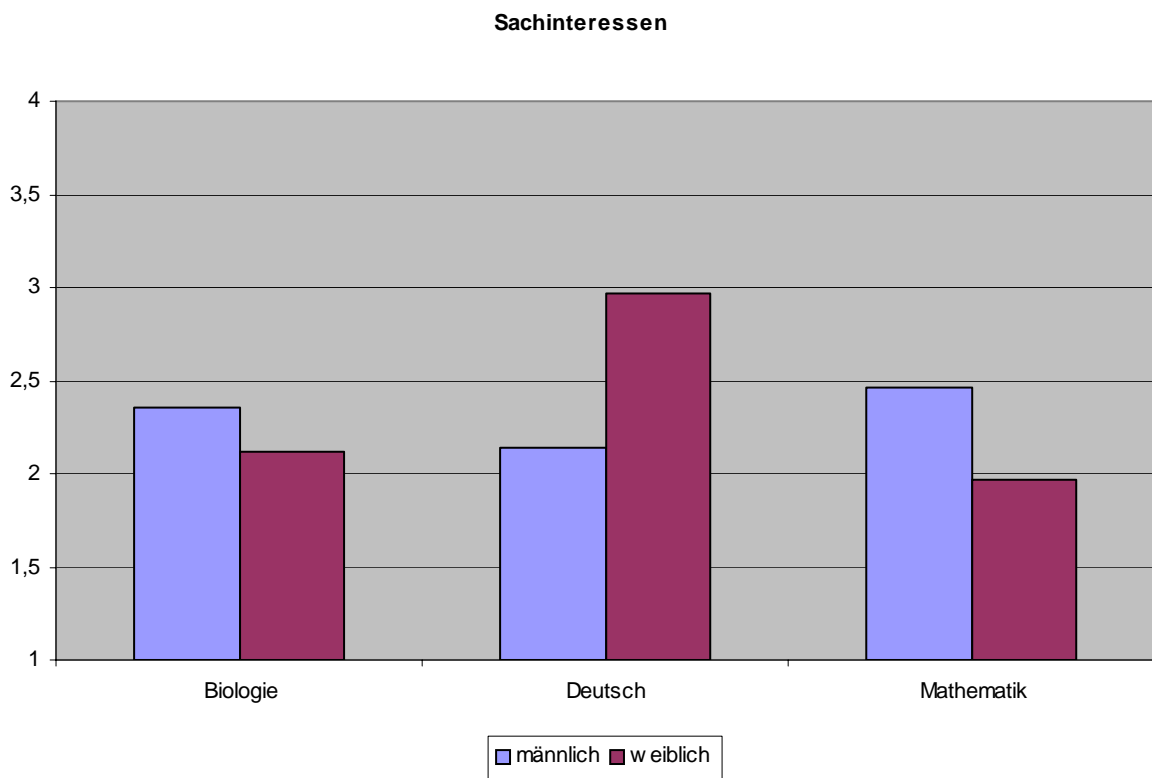


Abbildung 10

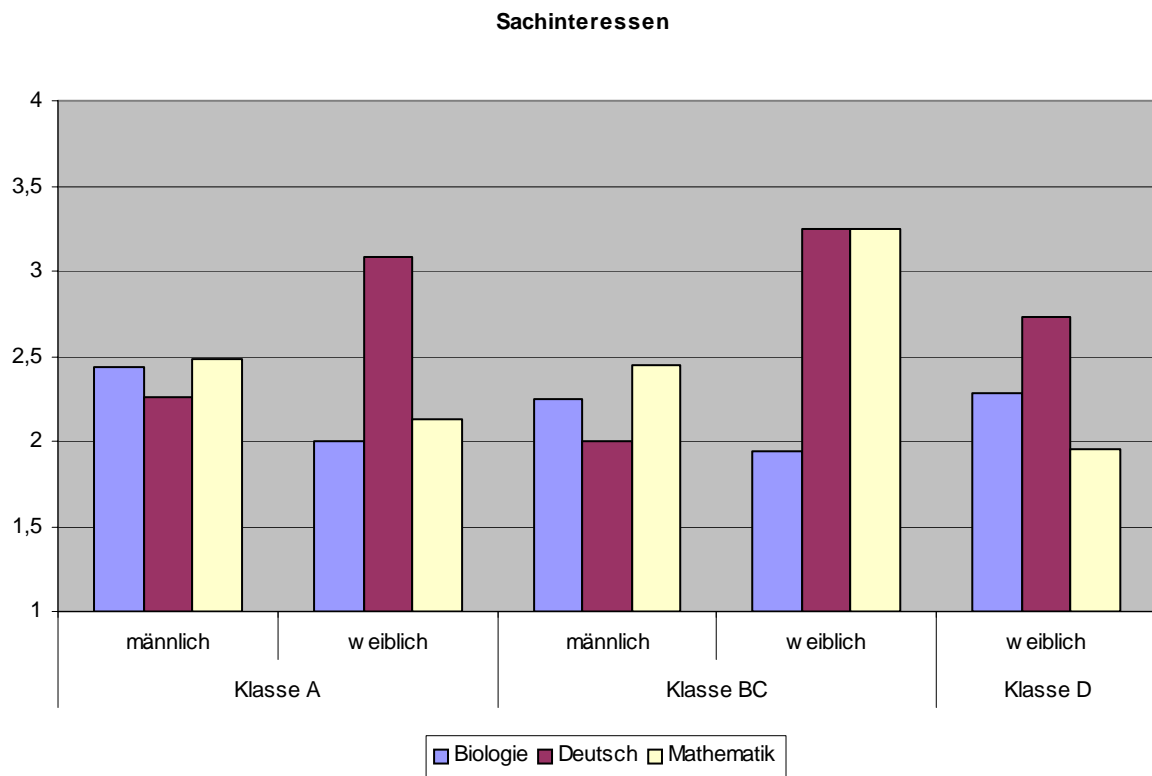


Abbildung 11

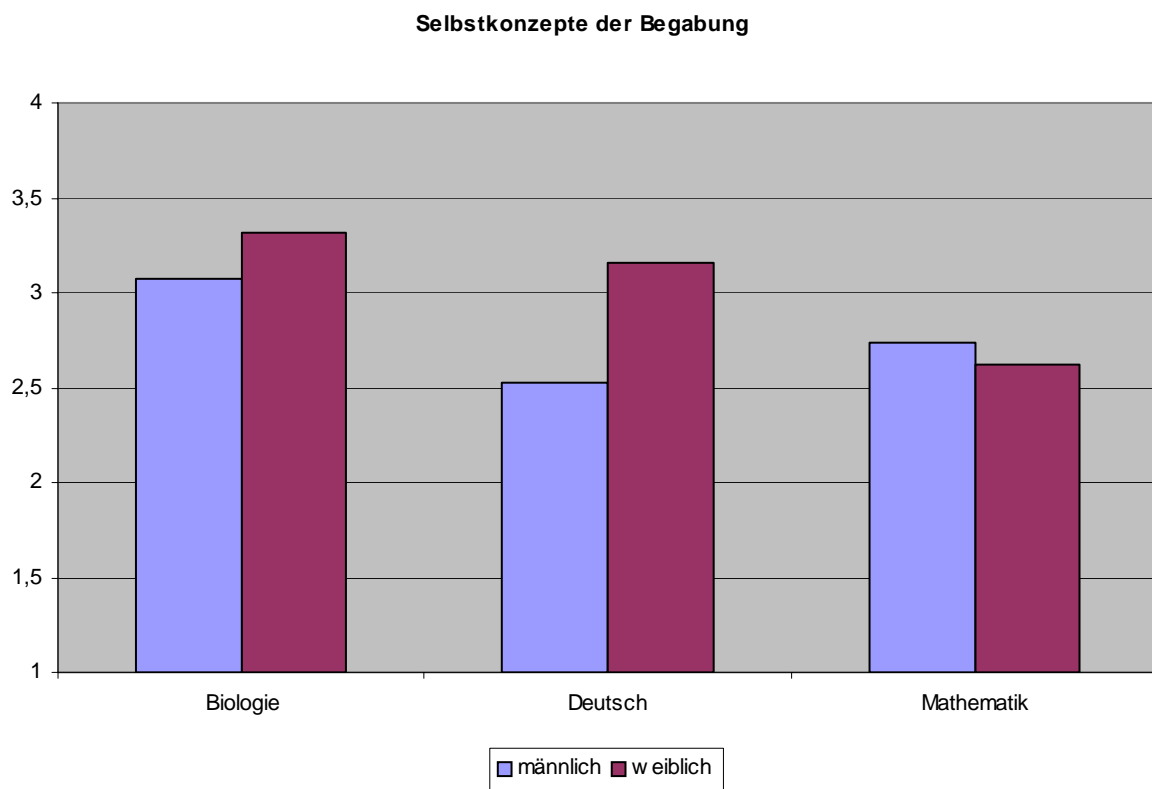


Abbildung 12

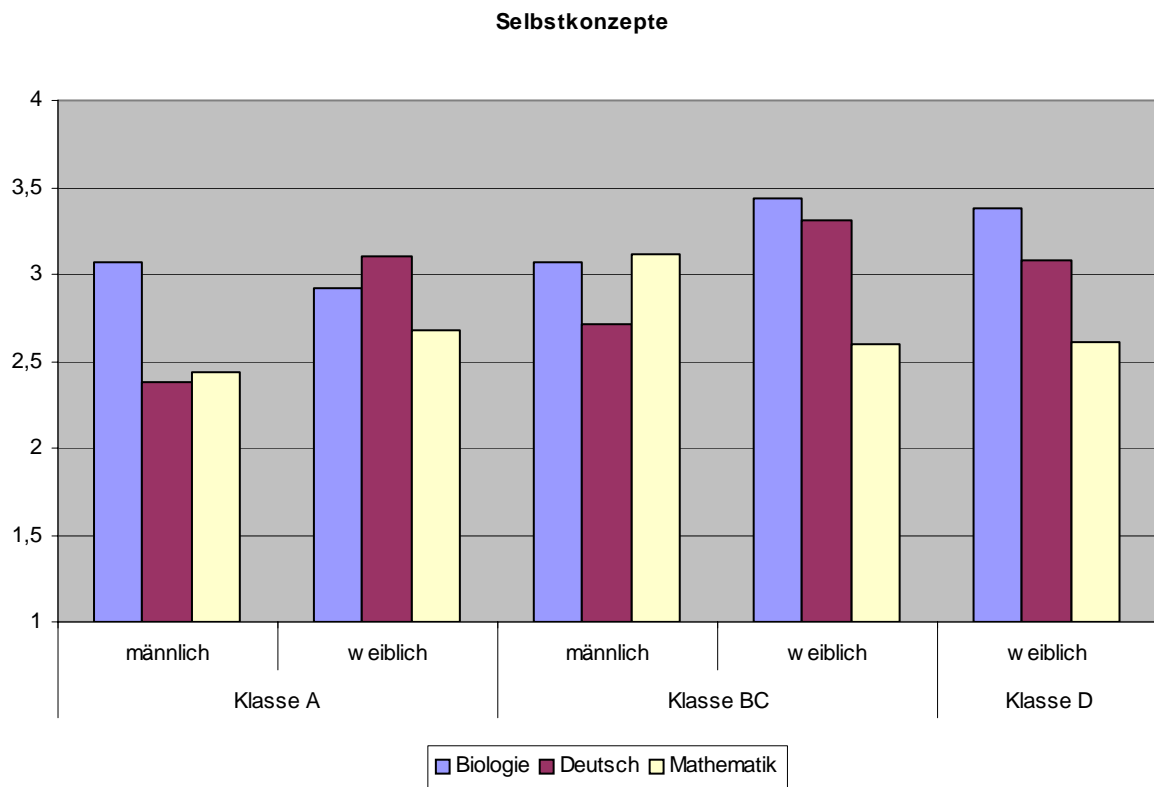


Abbildung 13

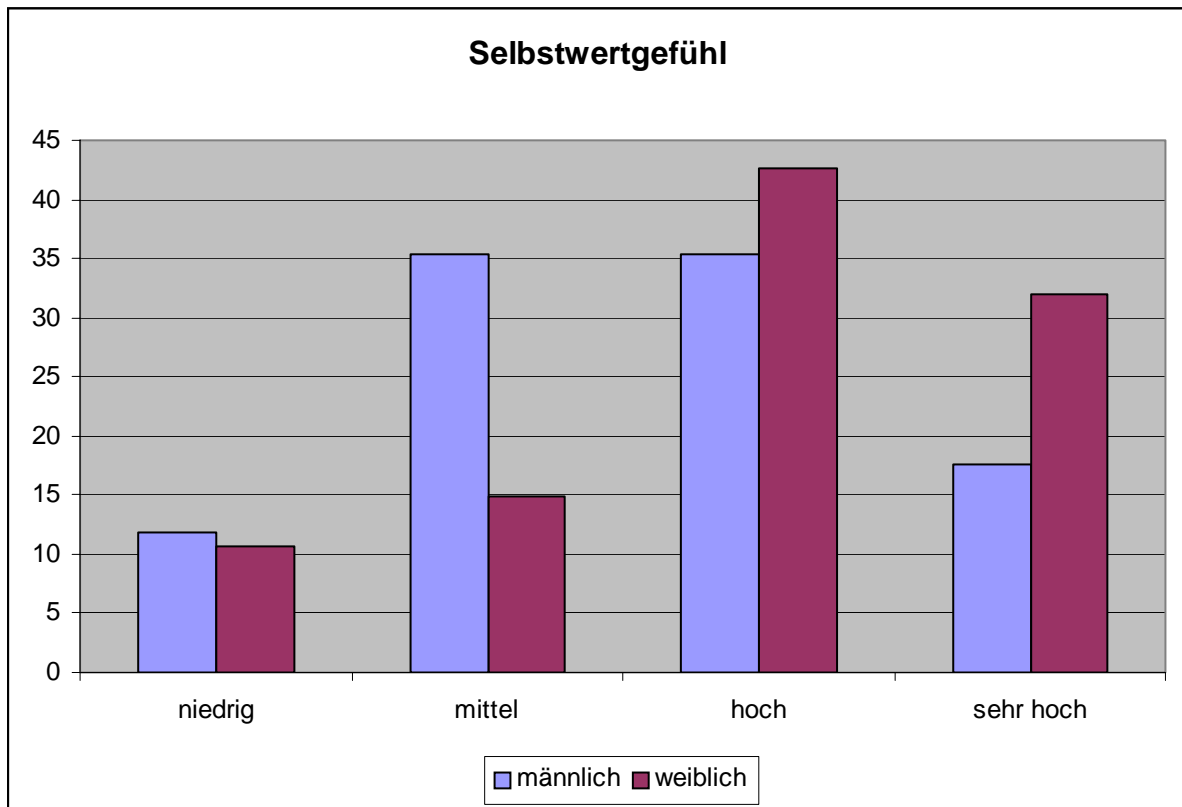


Abbildung 14

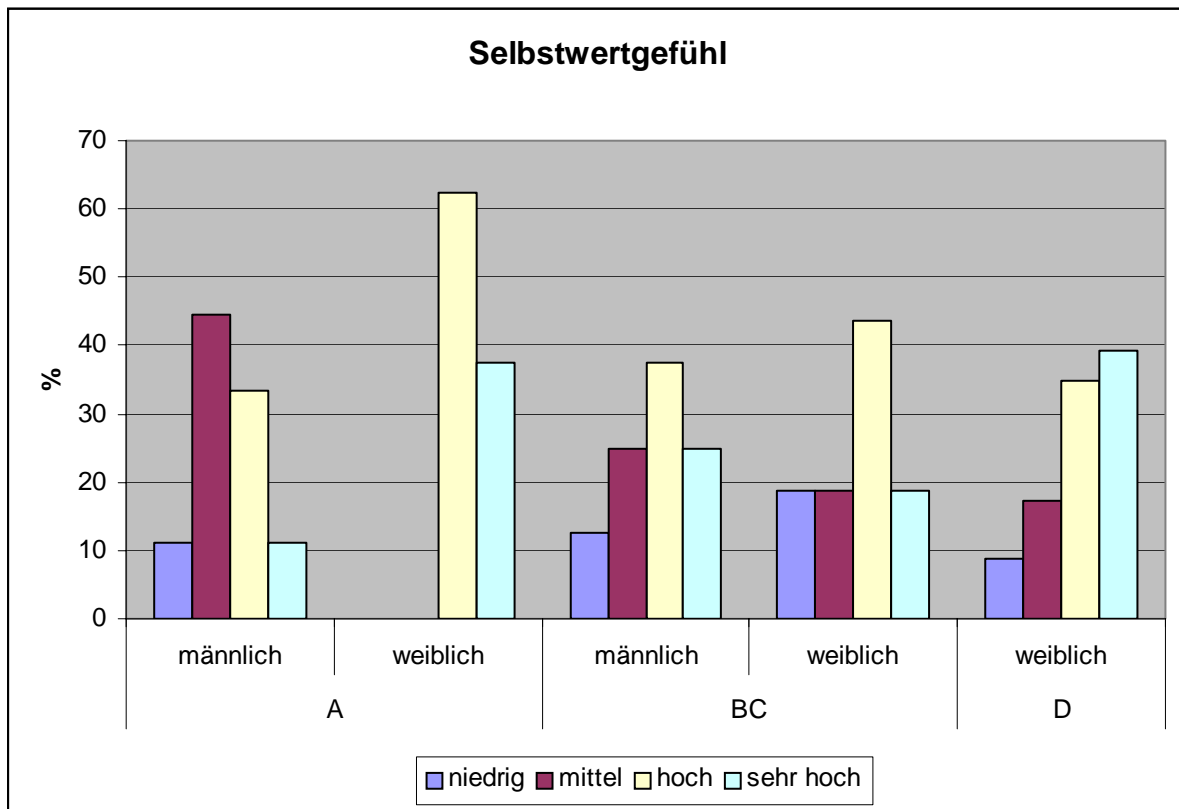


Abbildung 15

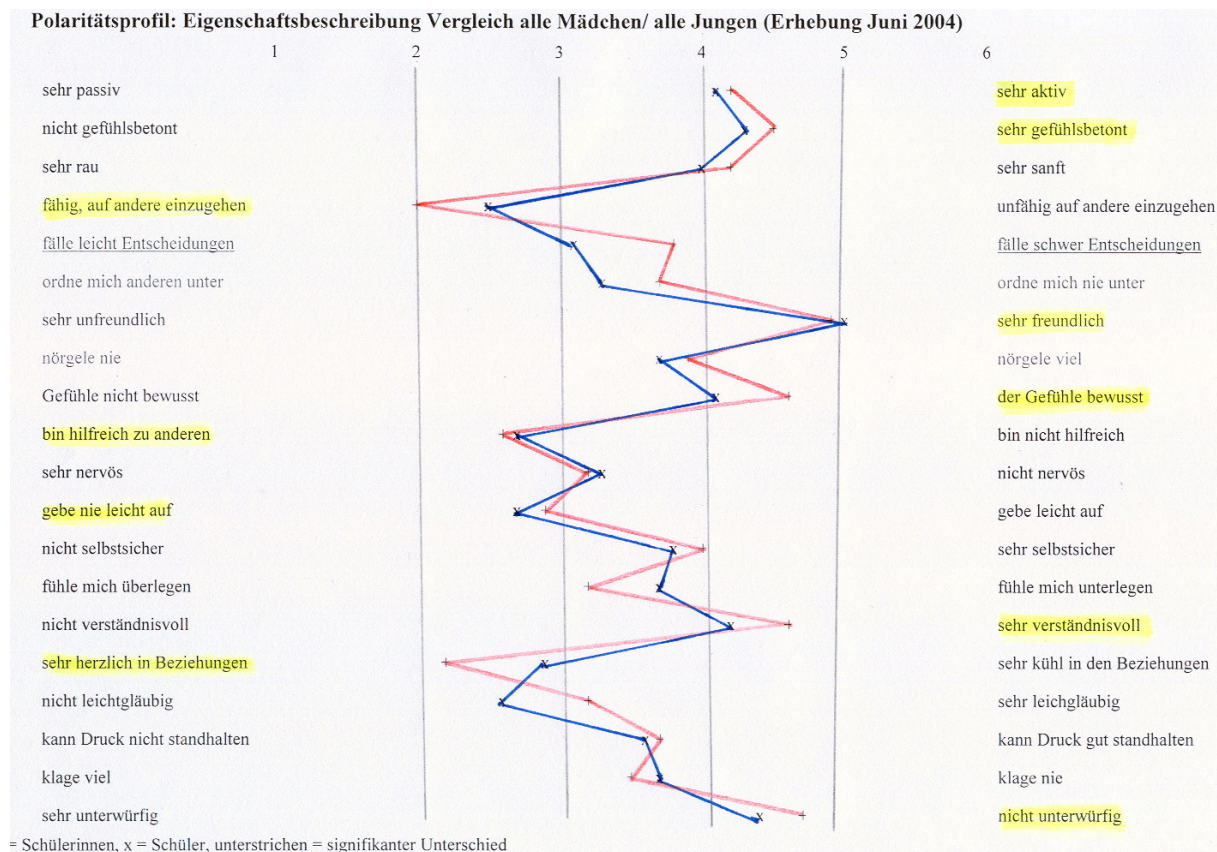


Abbildung 16

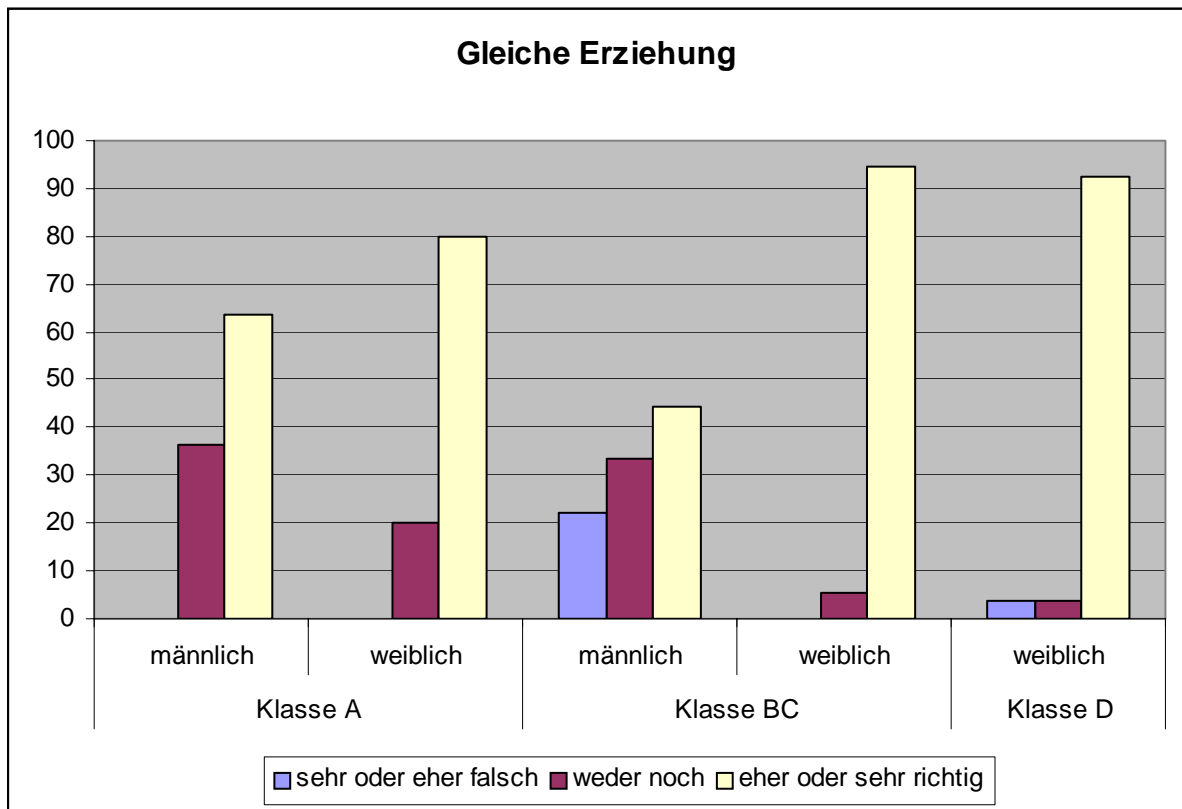


Abbildung 17

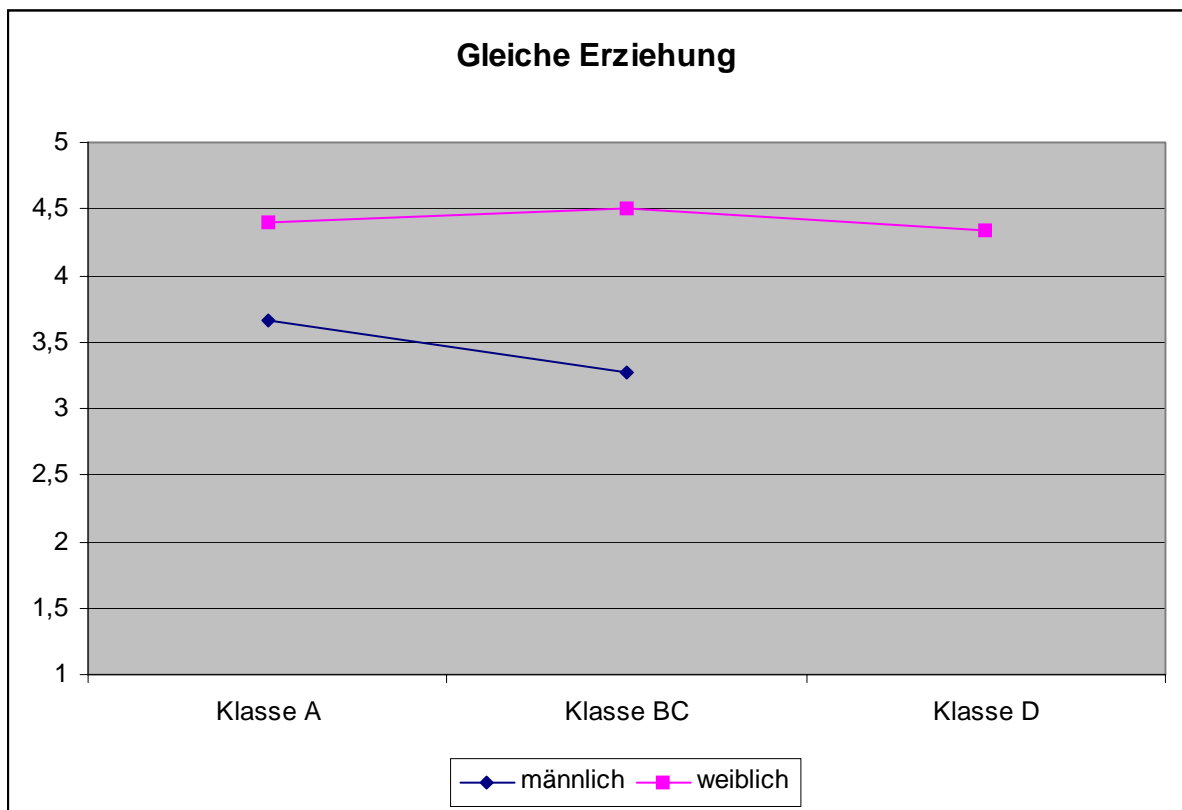


Abbildung 18

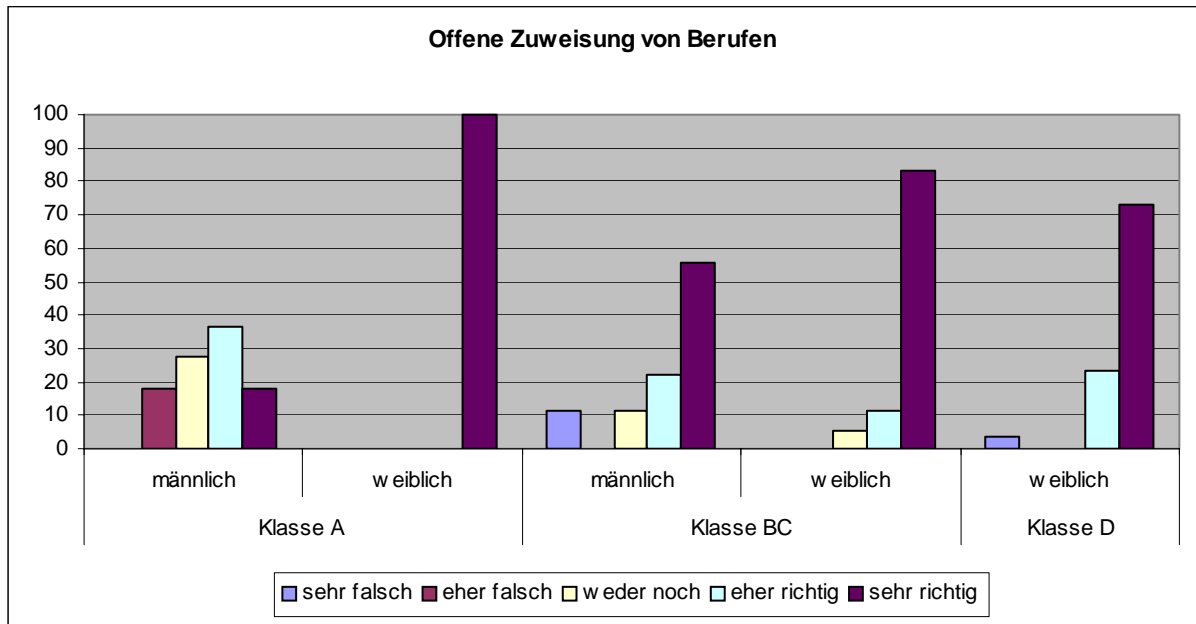


Abbildung 19

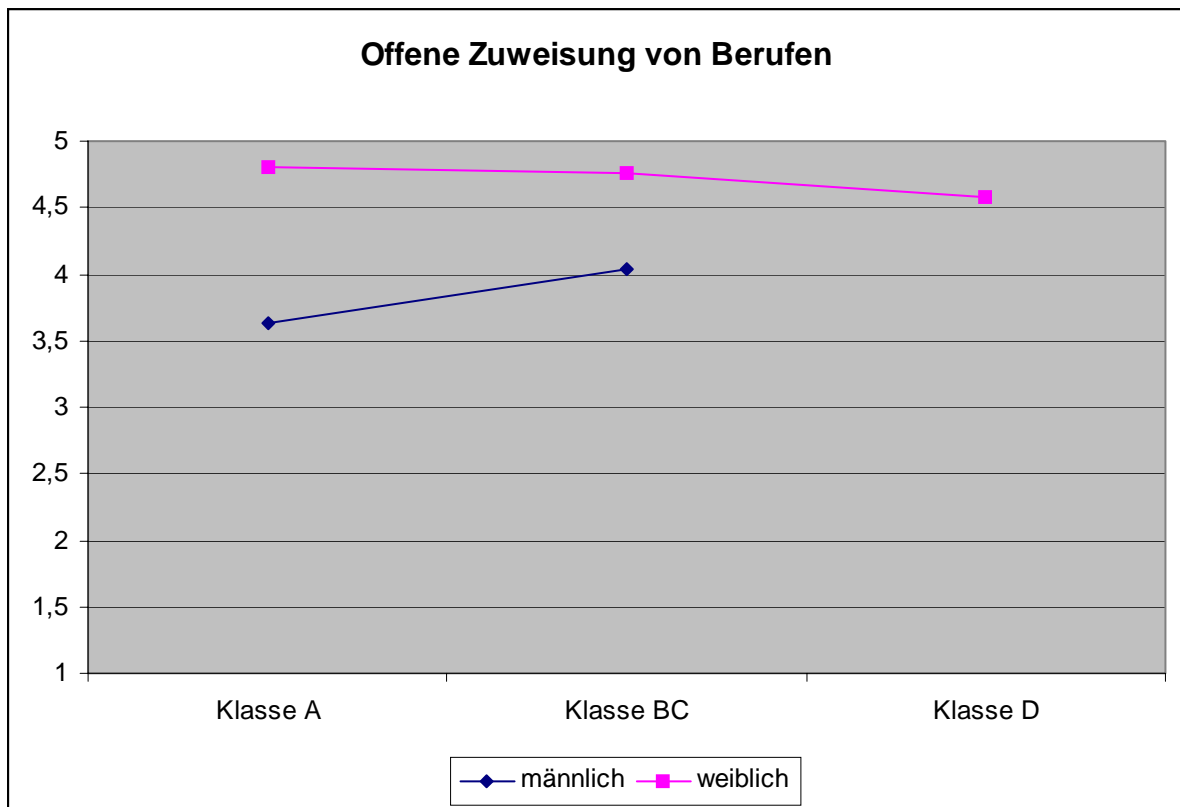


Abbildung 20

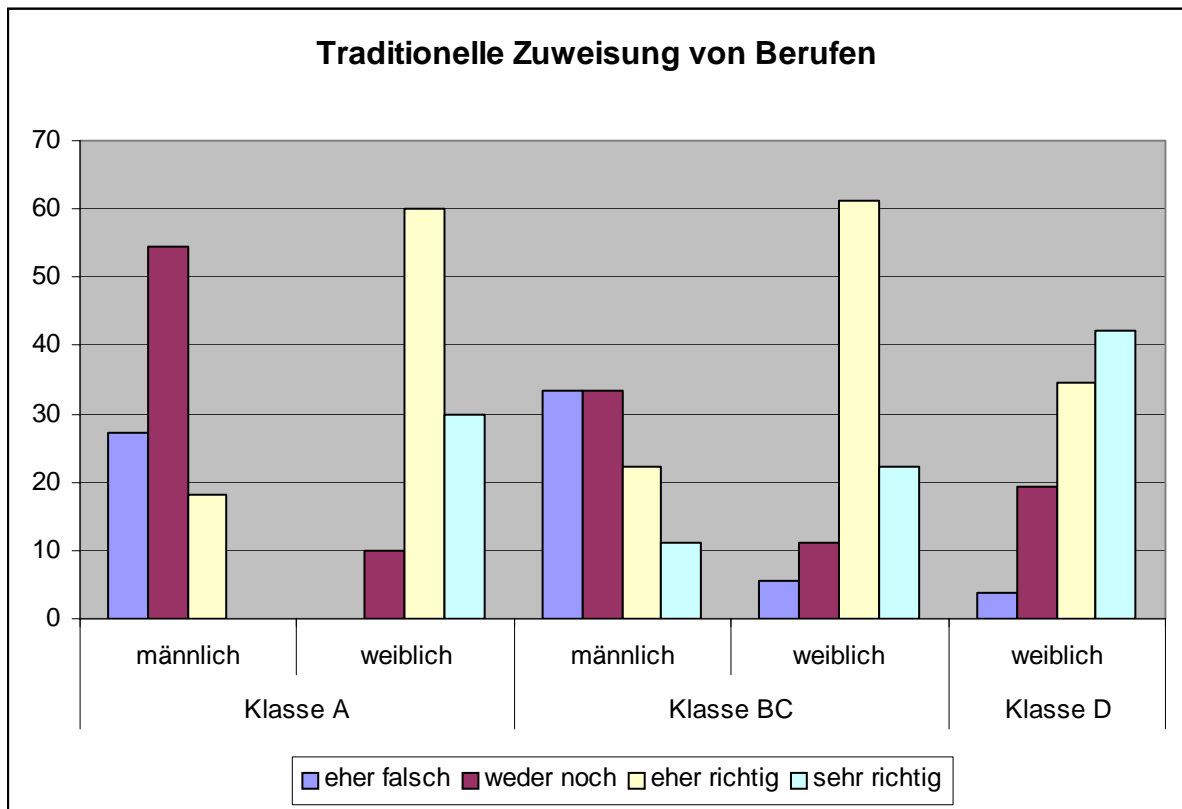


Abbildung 21

